

Customised Solution of your **ART** Needs



Sobha Medical Equipment (P) Ltd.
IVF Lab, Modular OT

: Our Certification :



Company Profile

Sobha Medical Equipment (P) Ltd.

Sobha Medical Equipment (P) Ltd. is an approach to the Health Care Industry to create, modify, enhance, and protect the business environment for our clients through creating most updated services based on the cost effective value for money. We carefully balance the combination of knowledge of the market, the innovative approach to perfection, and the experience in work for last eighteen years in health industry enhance Sobha Medical Equipment capabilities to effectively manage perceptions of projects. Adherence to stringent ethical standards, as well as the use of updated equipments and technology makes Sobha Medical Equipment capable of optimally satisfying the needs of its clients."

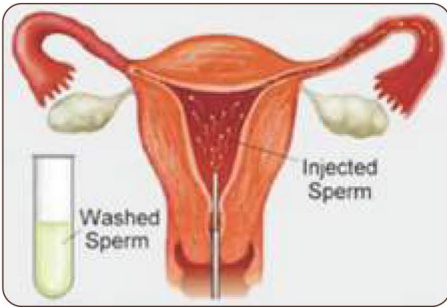
Our Competence

- IVF-ICSI & IUI lab set-ups on turnkey basics.
- Modular O.T.
- Modular Lab.
- Clean Air Room.
- ICU / ICCU / NICU set-up.
- Clean Air Work-Stations.
- Air purifier system for O.T. & Labs.
- Updated Equipments for Hospital & Labs.
- Furniture for Hospital & Labs.
- HVAC work
- Antistatic Flooring
- Meta Flex Doors

Our Merits

- Unique and creative solutions that meet the clients expectations not only by realizing the clients business objectives, but particularly by our strict adherence to the ethical principles of health industry.
- Continuous search for opportunities for the customer beyond the agreed business objectives.
- Creative approach to the client's special needs in order to find unique and tailored services.
- Team work based on the implementation of knowledge of the industry.
- Professional quality services provided by a highly motivated team.
- Courage and readiness to execute project on behalf of client needs.
- Strong technological background.
- 24/7 availability.

We provide the best service.



IUI / Andrology

Intrauterine insemination, or IUI, is a first-line infertility treatment which consists of placing prepared sperm within the uterus around the time of ovulation. IUI can be done with partner's fresh or frozen sperm or with frozen donor sperm.

Products



Thermo Bath 412



Mackler Chamber



Olympus Microscope



IUI Laminar Flow



Centrifuge

Resources

Being the first step in Assisted Conception method, IUI requires three rooms, Andrology Lab, Insemination room & Semen Collection room. IUI insemination can be done in routine OT. Area of around 100 - 150 sq. ft. is ideal and also taking into consideration the ever-adding instruments for latest techniques.

Equipments

- IUI Laminar Flow Or Utility Table.
- Trinocular Or Binocular Microscope.
- Thermo Bath 412.
- Sperm Counting Chamber
- Centrifuge with Swing Out Head.
- Serological Incubator

Consumables

- Culture Media.
- Disposables.

Indications for IUI

Male infertility, Cervical factor, Endometriosis, Unexplained infertility, Female humoral antisperm antibodies are the indications for IUI. Doctors might try 3 to 6 cycles of IUI, and if these are not successful, one recommends more advanced methods such as IVF.



IVF - In Vitro Fertilization

IVF is the process of fertilization by manually combining an egg and sperm in a laboratory dish. When the IVF procedure is successful, the process is combined with a procedure known as embryo transfer, which is used to physically place the embryo in the uterus.

Indication of IVF

The reasons why IVF is done includes - poor sperm quality or quantity, obstructions between the egg and sperm, ovulation problems and sperm-egg interaction problems. These problems can prevent couples from having a baby naturally, hence IVF helps to solve this.



Bench top Incubator



Stereozoom Microscope

Resources

Area of about 1200 - 1500 sq. ft. would be an ideal space for having an international standard IVF centre. The rooms required are IVF Lab, OT / ET, Utility room, Air processing room, Semen Collection room, Scrub-Changing & Storage unit. Apart from this, it could include reception, training centre, back office and other utilities.

As a teamwork, IVF requires Gynecologist, Embryologist and a Nurse supported by Counselor & Program Coordinator.

Products

Equipments:

- CO₂ Incubator.
- IVF Laminar Airflow
- Steriozoom Microscope.
- Suction Pump.
- Thermo Bath 412.
- AIRplus (Positive Pressure System)
- AIRplus Tower
- Cryocanes
- Bench Top Incubator
- Microscopic Camera
- ICSI
- Laser
- VOC Meter
- CO₂ Analyzer

Consumables:

- Culture Media.
- Disposables.



Craft Suction Pump



IVF Laminar Flow

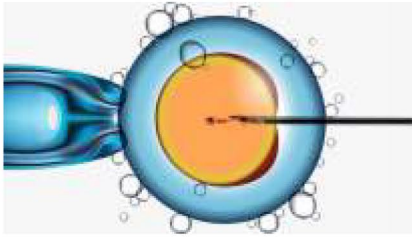
ICSI

CO₂ Incubator

Air Plus

Modular IVF Lab.

ICSI - Intra-Cytoplasmic Sperm Injection



ICSI is a technique utilized to inject a single sperm into the egg with a very fine glass needle by means of a micro-manipulator in order to achieve fertilization, unlike conventional IVF. A single motile, mature, normal looking sperm is selected for injection under a high magnification microscope.

Calibrating Tools



Temperature Meter



VOC Meter



CO₂ Analyzer

ICSI



ICSI

Utility Table

Equipments:

- Inverted Microscope. (Olympus / Nikon)
- Micromanipulators and Injectors.
- Thermo plate.
- Antivibration Table.
- Camera and Monitor.



ICSI

Antivibration Table

Laser



Biopsy mode allows accurate laser drilling along a straight or curved drawn line with excellent accuracy and a unique computer controlled laser with guaranteed laser alignment

Lowest laser pulse energy for minimal energy near critical cells. Exclusion Zone™ feature ensures cell safety. Intuitive RI Viewer software package with streamlined interface. Programmable foot pedal controls software and laser functions including the new biopsy mode

Vitrification



Vitrification is a specialized freezing technique, which freezes the specimens so quickly, ice crystals don't have time to form. It is recommended when high-quality embryos often remain after embryo transfer. These embryos remain frozen until the patient is ready to use them.

Modular O.T.



Sobha Medical Modular OT is designed as per ISO specification to provide dust free and a clean environment in an isolated area for conducting any specific medical activity like surgical operation, replacement surgeries, etc.

Obstetric Labour Table

Sobha Medical Obstetric Labour Table has been specially designed keeping the most demanding requirements during delivery and ART related procedure in mind.



Shadow-Less O. T. Light



Sobha Medical has a wide range of shadow less OT lights. These lights are equipped with heat absorbing & color correcting special filter glass which ensures their proper functioning.

Anesthesia Machine

Sobha Medical anesthesia workstations offers a comprehensive patient care. The workstations are equipped with O₂ & N₂O Connections, Option for Central Gas Pipe Line Connection, High Pressure & Low Pressure Display Gauge, Anti-Hypoxic Device Rotameter, Audio Visual Oxy failure Alarm and a Standard Magill's Circuit.



Multipara Patient Monitor



Sobha Medical provides an excellent quality of Monitoring Equipments like Multipara Monitor, Medical Multipara Monitor, Surgical Multipara Monitor, Multipara Monitor Exporter and Central Monitor System for all types of critical care areas & ambulatory set ups.

Automatic Scrub Sink



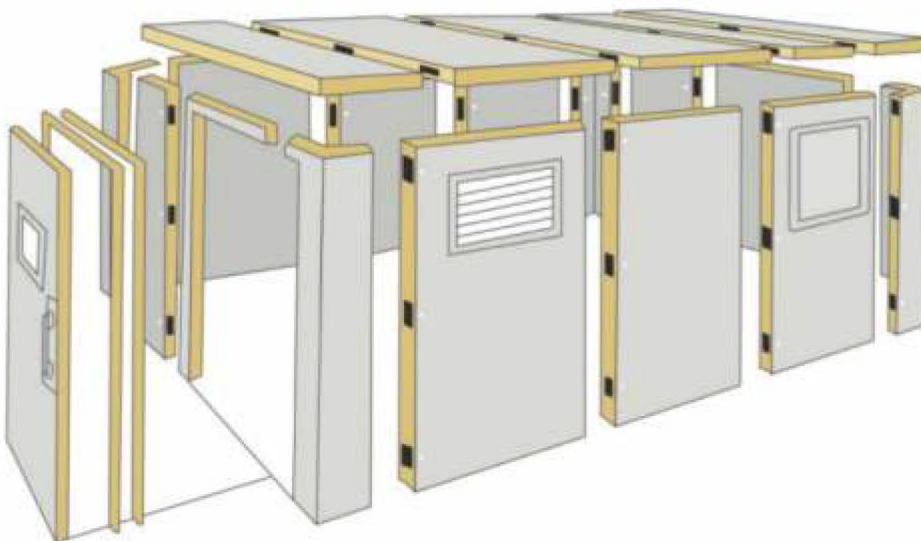
Sobha Medical compact Automatic Scrub Sink is made up of high grade stainless steel (SS-304) with a seamless welded construction for use in hospitals, surgery centers & health care industries providing a simple convenient way to wash up for pre-op scrubbing. The system is fully assembled with thermostatic mixing valve to maintain a constant water temperature for cold and hot water, solenoid valve control, foot operated manual operation.

High Pressure Steam Sterilizer



Sobha Medical has a wide range of high pressure steam sterilizers (Autoclave Machine) which have been specially designed keeping the most demanding requirements during different medical procedure in mind.

Pre-fabricated PUF Panels



Sobha Medical brings a qualitative range of pre fabricated PUF Panels to their clients. These are ideal for wall cladding and roofing in construction of Clean Air Rooms and Modular OT, that requires a clean environment for surgical or medical purpose.

Cubicle Partition Curtains

Sobha Medical cubicle track is provided with a track, carriers, gates, stops and it splices directly into finished ceiling, or recessed.



Positive Pressure System

AIRplus is designed to improve the air quality, making it nearly equal to Class 100 Air. Thus replenishing and subsequently nourishing the entire workspace, making it safe for the sensitive procedures to be executed. This is achieved by a number of inclusions and their applications all of which are simple, cost effective and user friendly.

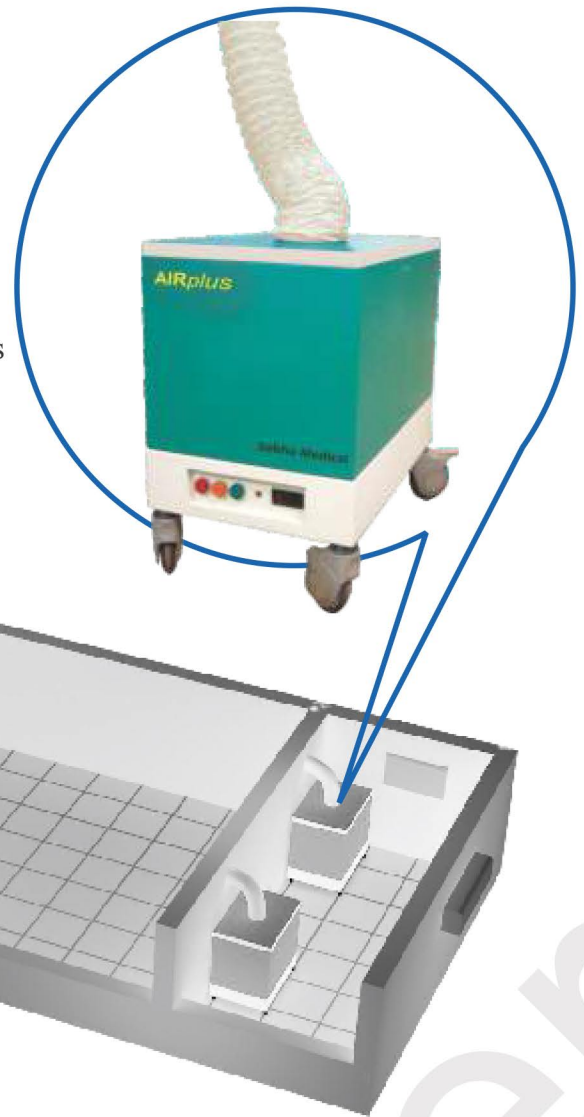
In **AIRplus** unobstructed airflow moves freely through large filters without changing direction and without creating any turbulence. This simplified, direct air flow improves the overall air purifier performance.

The **AIRplus** has been designed with State of the Art technology

The unique filter combination filters out air and gas contaminant thus giving most suitable air.

AIRplus system contains a unique 3 stage filtration system containing Pre-filter, Activated Carbon filter and HEPA Filter, which ensures wide variety

of Gases, particular contaminants are oxidized or absorbed. It's been designed to reduce the microbial air flora to the minimum level.



Our Clients



NRS - Kolkata



GMCH - Guwahati



BMSICL - Patna



ICMR - Patna



MGM - Kishanganj



AGMC - Agartala



NEIGRIHMS - Shillong



JNMIS - Imphal



Lord Buddha - Saharsa

Sobha Medical Equipment (P) Ltd.

67/2/5 College Road, Sibpur, Howrah 711103

Email : info.sobhamedical@gmail.com www.sobhamedical.com

Ph : +91 8777256085. M : 9230566808